

**ARCHITECT**



9211 CORPORATE BLVD, SUITE 340  
ROCKVILLE, MD 20850  
301-770-0177(P) 301-330-3234(F)

**CIVIL**  
**COLLINSON OLIFF & ASSOCIATES**  
110 MAIN STREET, P.O. BOX 2200  
PRINCE FREDERICK, MD 20678

**LANDSCAPE ARCHITECT**  
**SITE RESOURCES, INC.**  
14315 JARRETTSVILLE PIKE  
PHOENIX, MD 21131

**STRUCTURAL**  
**ADTEK ENGINEERS**  
150 SOUTH EAST STREET, SUITE 201,  
FREDERICK, MD 21701

**MECH/ELECTRICAL/PLUMBING**  
**JAMES POSEY ASSOCIATES**  
11155 RED RUN BLVD., SUITE 310  
BALTIMORE, MD 21117

**KITCHEN**  
**NYIKOS-GARCIA FOODSERVICE DESIGN, INC.**  
18219-A FLOWER HILL WAY  
GAITHERSBURG, MD 20878

**ROOFING CONSULTANT**  
**RESTORATION ENGINEERING, INC.**  
10503 WEST DRIVE, SUITE A  
FAIRFAX, VA 22030

**Professional Certification.** I hereby certify that these documents were prepared or approved by me, and that I am a duly licensed professional architect under the laws of the State of Maryland, License No.: 16066, Expiration Date: 1/6/2022.

PROFESSIONAL SEAL:

**PRINTS ISSUED**

NO.	DESCRIPTION:	DATE:
1	COORDINATION SET	9/18/20
2	DD PRICING SET	10/16/20

**BEACH ELEMENTARY**

**CALVERT COUNTY PUBLIC SCHOOLS**

SHEET TITLE:

**BUILDING ELEVATIONS - OVERALL**

PROJECT NO:

20005.00

DATE:

10/16/2020

SCALE:

1/16" = 1'-0"

SHEET NO:

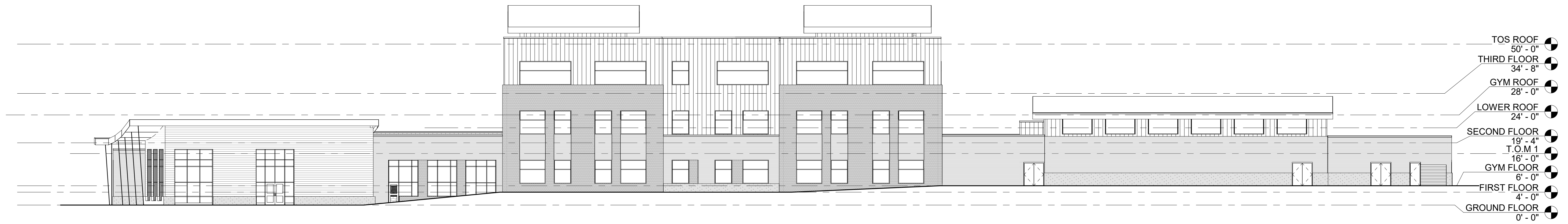
**A3.00**



4 SOUTH ELEVATION  
SCALE: 1/16" = 1'-0"



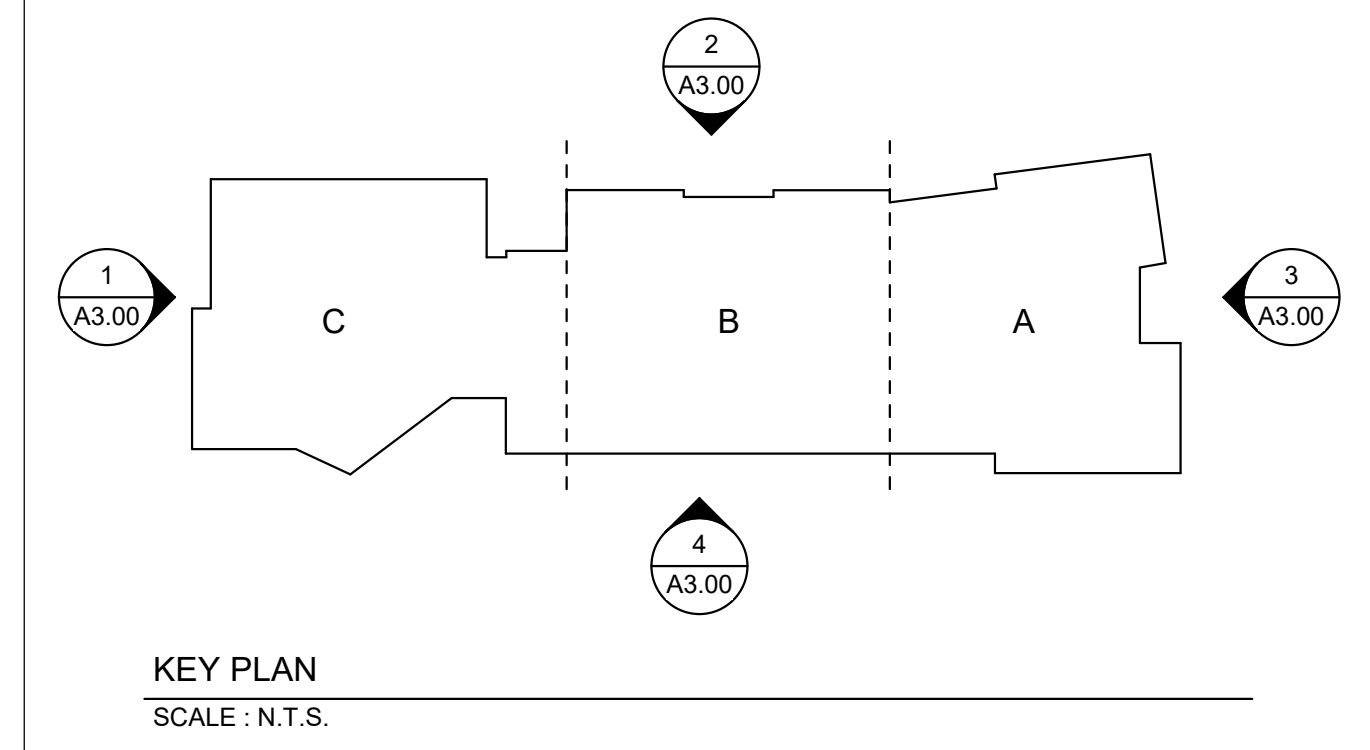
3 EAST ELEVATION  
SCALE: 1/16" = 1'-0"



2 NORTH ELEVATION  
SCALE: 1/16" = 1'-0"



1 WEST ELEVATION  
SCALE: 1/16" = 1'-0"



KEY PLAN  
SCALE: N.T.S.